



UPCOMING LUNAR MISSIONS, ROVERS, AND PAYLOADS

AJ, Chief Technology Officer & Co-Founder

Lunar Outpost is leading the way to a **sustainable human presence** in space with **advanced mobility** and **robotic systems**.

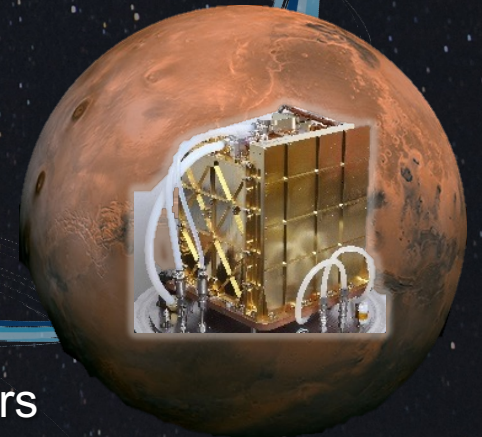


OPERATED ON THREE PLANETARY BODIES



Thousands of Lunar Outpost products
deployed on Earth since 2017

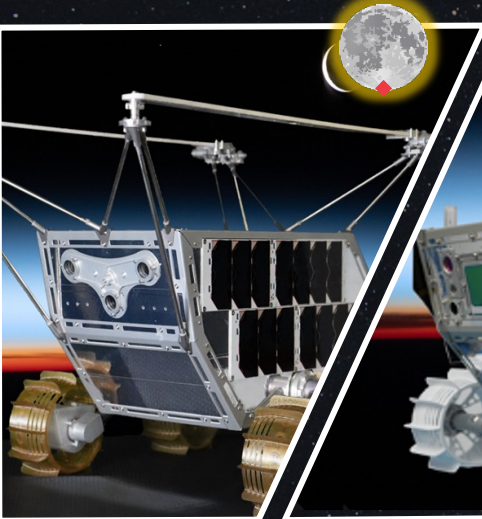
Mobility Infrastructure,
Commercial Ops,
& Lunar Science



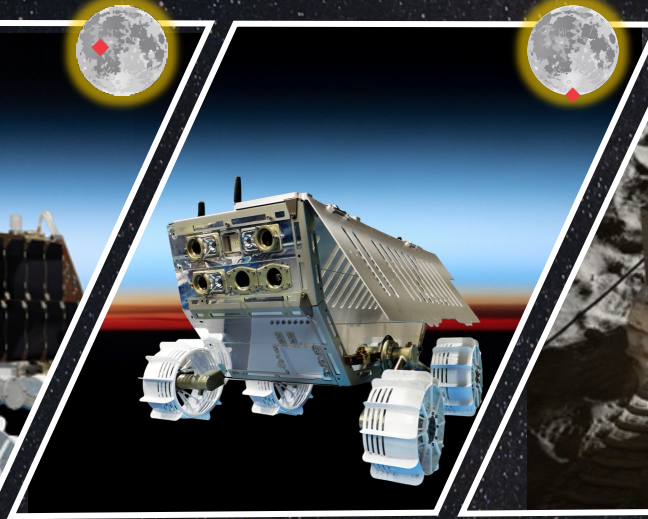
Making Oxygen on Mars

INFRASTRUCTURE IS BUILT WITH REGULAR LUNAR MISSIONS

LUNAR VOYAGE 1: MONS MOUTON
LANDED MARCH 2025



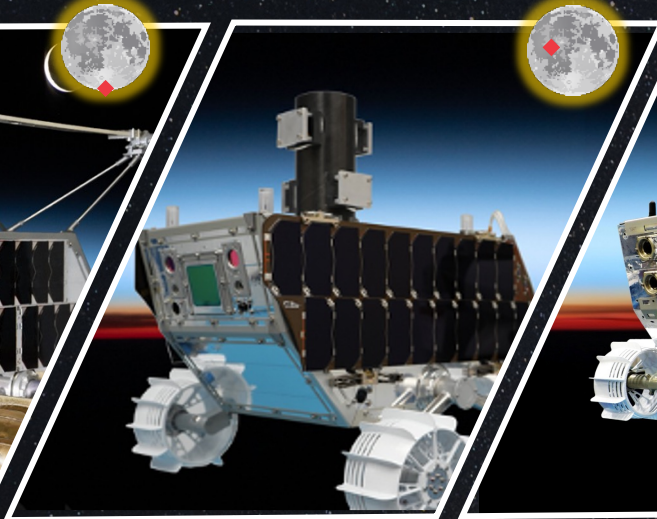
LUNAR VOYAGE 3: COMMERCIAL MISSION
LAUNCHING 2027



LTV: ARTEMIS PROGRAM
Post PDR 2025



LUNAR VOYAGE 2: REINER GAMMA
LAUNCHING 2026



LUNAR VOYAGE 4: AUSTRALIAN ROO-VER
LAUNCHING 2028



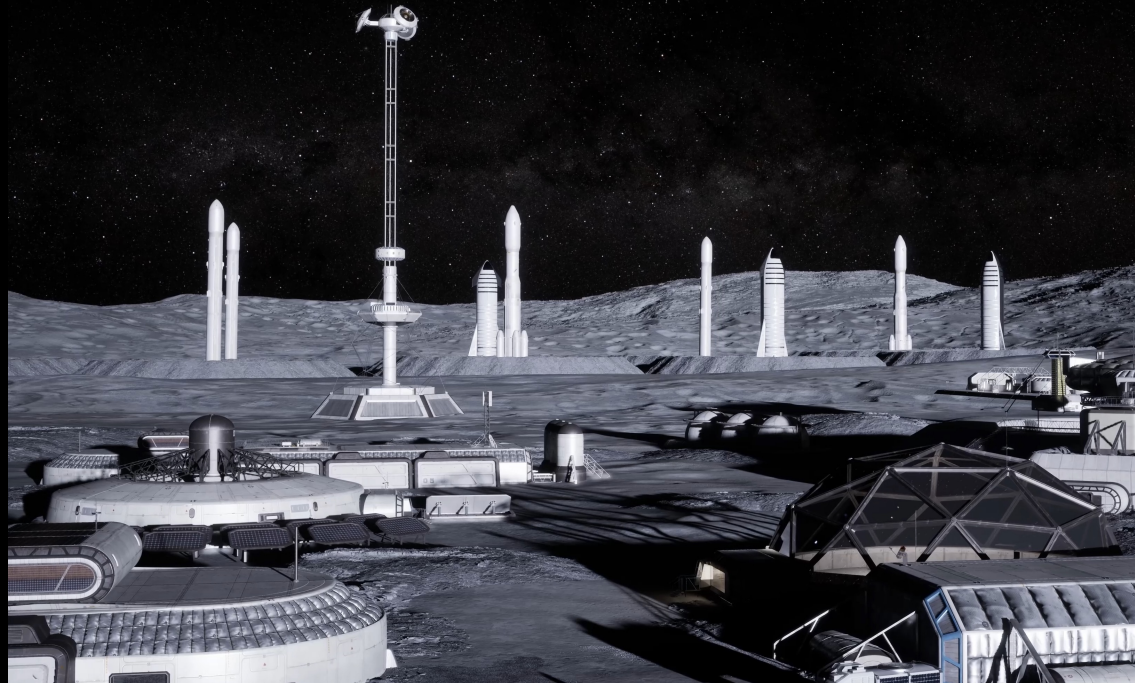
LUNAR VOYAGE 5: ARTEMIS IV
LAUNCHING 2028



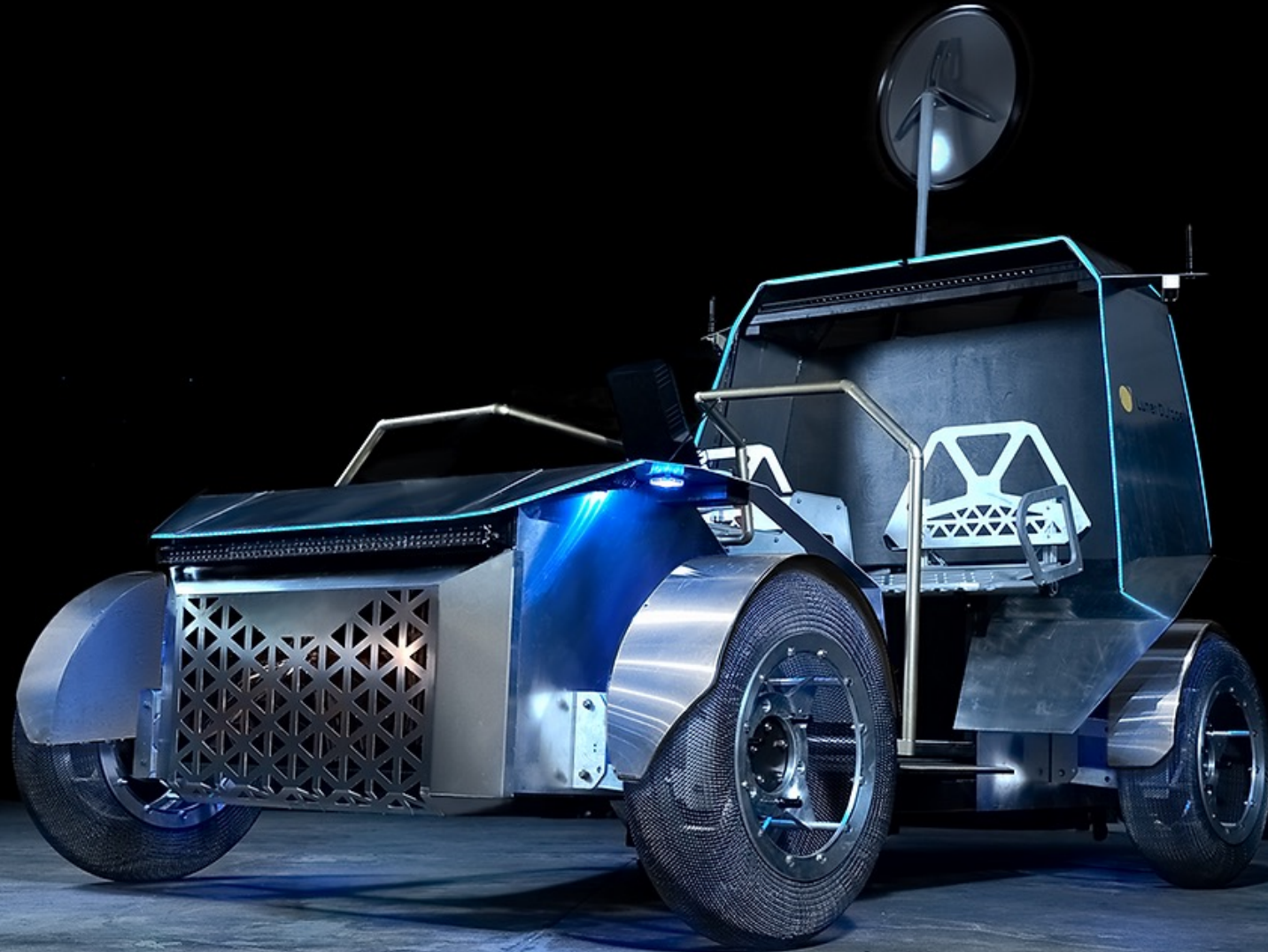
INFRASTRUCTURE THAT ENABLES FURTHER DEVELOPMENT

Serves as the enabler for infrastructure development to sustain human life and the lunar economy

- Habitat & surface asset construction
- Landing site preparation
- Resource extraction and processing



LUNAR OUTPOST PEGASUS LTV



BUILDING THE MOON BASE

Serves as the first infrastructure component on the Moon in 2028 providing:

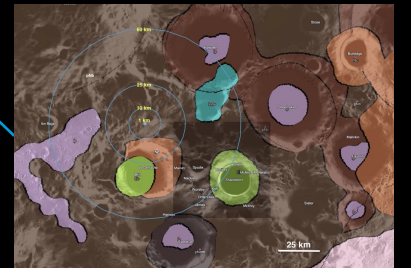
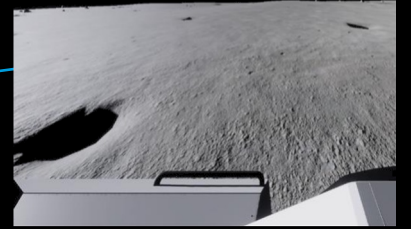
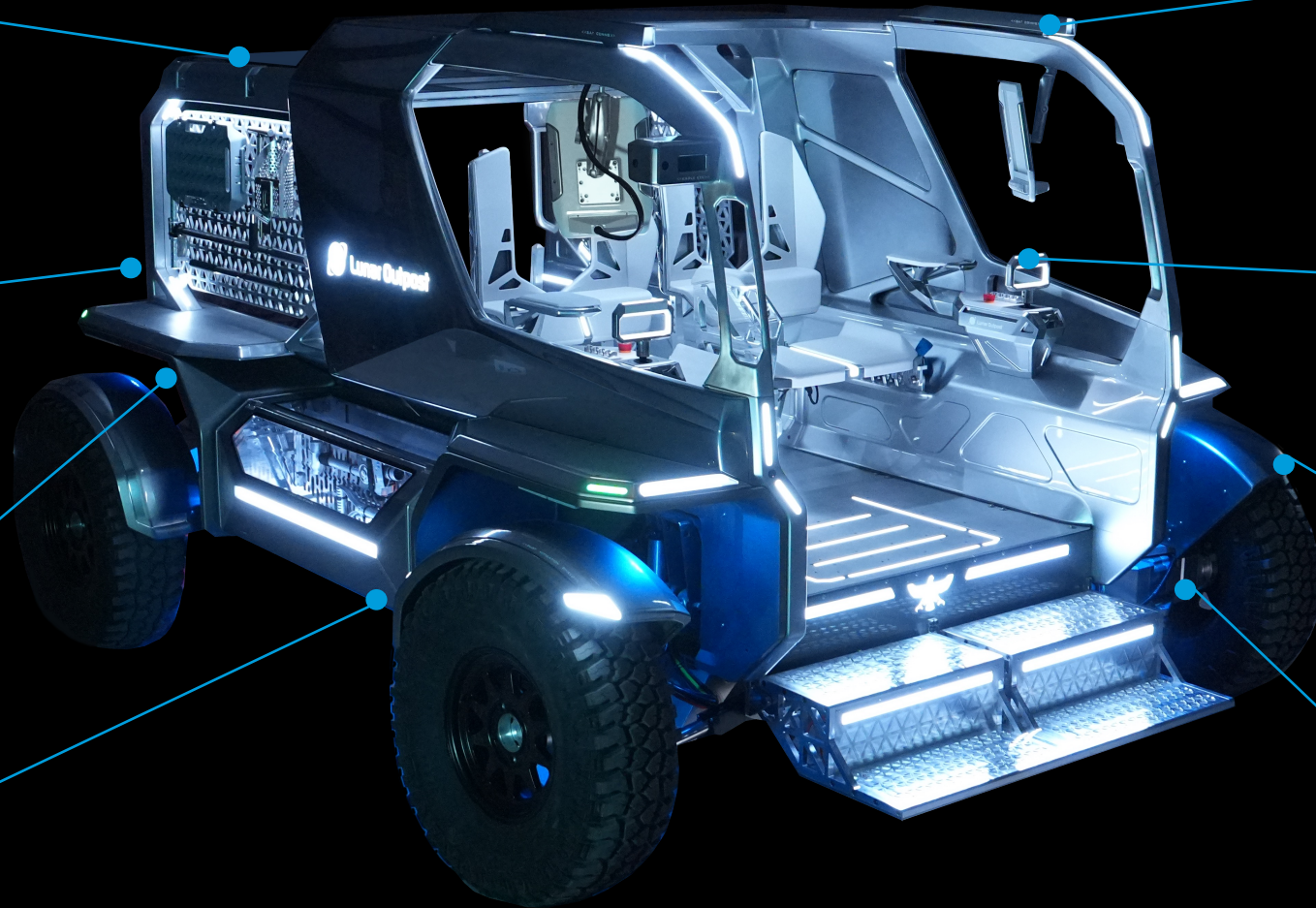
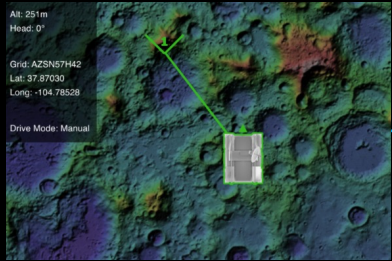
- Crew logistics
- Site preparation & autonomous mapping
- Groundwork for long-term, sustainable lunar operations



LUNAR OUTPOST EAGLE LTV



DESIGNED AS PERMANENT LUNAR INFRASTRUCTURE



EAGLE IS THE BACKBONE OF LUNAR SURFACE INFRASTRUCTURE



POWER

- To payloads & stationary surface assets
- Lunar night & PSR operations



LOGISTICS

- Deliver, deploy, & service
- High cargo capacity for site construction
- Execute resupplies & repairs



COMMS

- Relay for surface assets & instruments
- 3GPP for surface networking



RESOURCES

- Modular on-boarding & replacement
- Mapping lunar environment
- Extract regolith samples; ISRU



EAGLE IS THE BACKBONE OF LUNAR SURFACE INFRASTRUCTURE



POWER

- To payloads & stationary surface assets
- Lunar night & PSR operations



LOGISTICS

- Deliver, deploy, & service
- High cargo capacity for site construction
- Execute resupplies & repairs



COMMS

- Relay for surface assets & instruments
- 3GPP for surface networking



RESOURCES

- Modular on-boarding & replacement
- Mapping lunar environment
- Extract regolith samples; ISRU



EAGLE IS THE BACKBONE OF LUNAR SURFACE INFRASTRUCTURE



POWER

- To payloads & stationary surface assets
- Lunar night & PSR operations



LOGISTICS

- Deliver, deploy, & service
- High cargo capacity for site construction
- Execute resupplies & repairs



COMMS

- Relay for surface assets & instruments
- 3GPP for surface networking



RESOURCES

- Modular on-boarding & replacement
- Mapping lunar environment
- Extract regolith samples; ISRU



EAGLE IS THE BACKBONE OF LUNAR SURFACE INFRASTRUCTURE



POWER

- To payloads & stationary surface assets
- Lunar night & PSR operations



LOGISTICS

- Deliver, deploy, & service
- High cargo capacity for site construction
- Execute resupplies & repairs



COMMS

- Relay for surface assets & instruments
- 3GPP for surface networking



RESOURCES

- Modular on-boarding & replacement
- Mapping lunar environment
- Extract regolith samples; ISRU



This future launches now



Thank you!

AJ Gemer

Chief Technology Officer
Lunar Outpost

aj@lunaroutpost.com

Lunaroutpost.com

